

TUENZ<sup>®</sup> OTR Wheels

TUENZ<sup>®</sup> Your Professional, Reliable Partner

*Off-The-Road Applications  
Earth-moving & Industrial Wheels*



**Nantong TUENZ Wheels Co.,Ltd**

No. 1, Taoyuan Road, Central Business District, Nantong,  
Jiangsu Province, China 226000  
Tel: +86 513 8066 3836  
Fax: +86 513 8110 9500  
E-mail: sales@tuenz.com  
Http://www.tuenz.com

**Nantong TUENZ Wheels Co.,Ltd**  
<http://www.tuenz.com>



## Earth-moving & Industrial Wheels

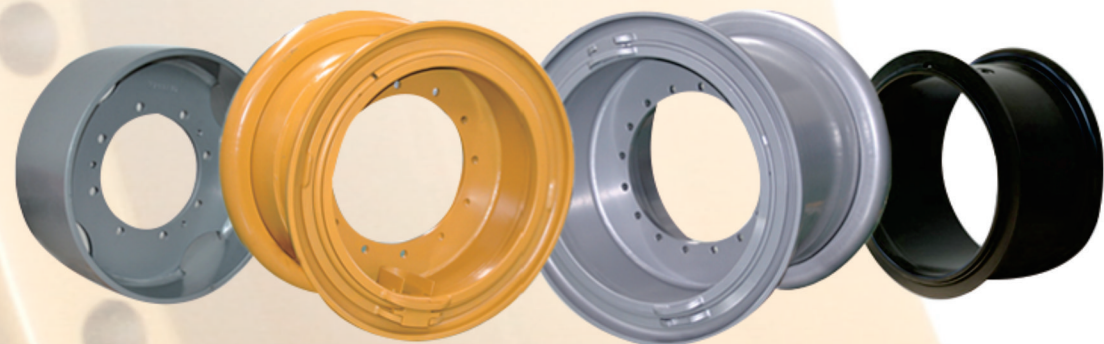
Nantong TUENZ Wheels co., Ltd is the Chinese leading wheels suppliers, with it's establishment in year 2010. has over 10 years experiences in manufacturing, R&D, and sales of complete ranges of wheel products in commercial vehicles, earthmoving, industrial and Agriculture applications.

The company HQ is located in Nantong city, Jiangsu province, China, and six wheels production bases are located in four provinces of China, with accumulated great know how in wheels industry.

Tuenz Earth-moving & Industrial wheel plant is a key member of Chinese Construction Machinery Wheels Association, and in participating of Chinese Earth-moving & Industrial wheels standard set up. We have our own production of section steel materials, to ensure manufacturing capability, shorter lead time, and reliable supplying to our customers.

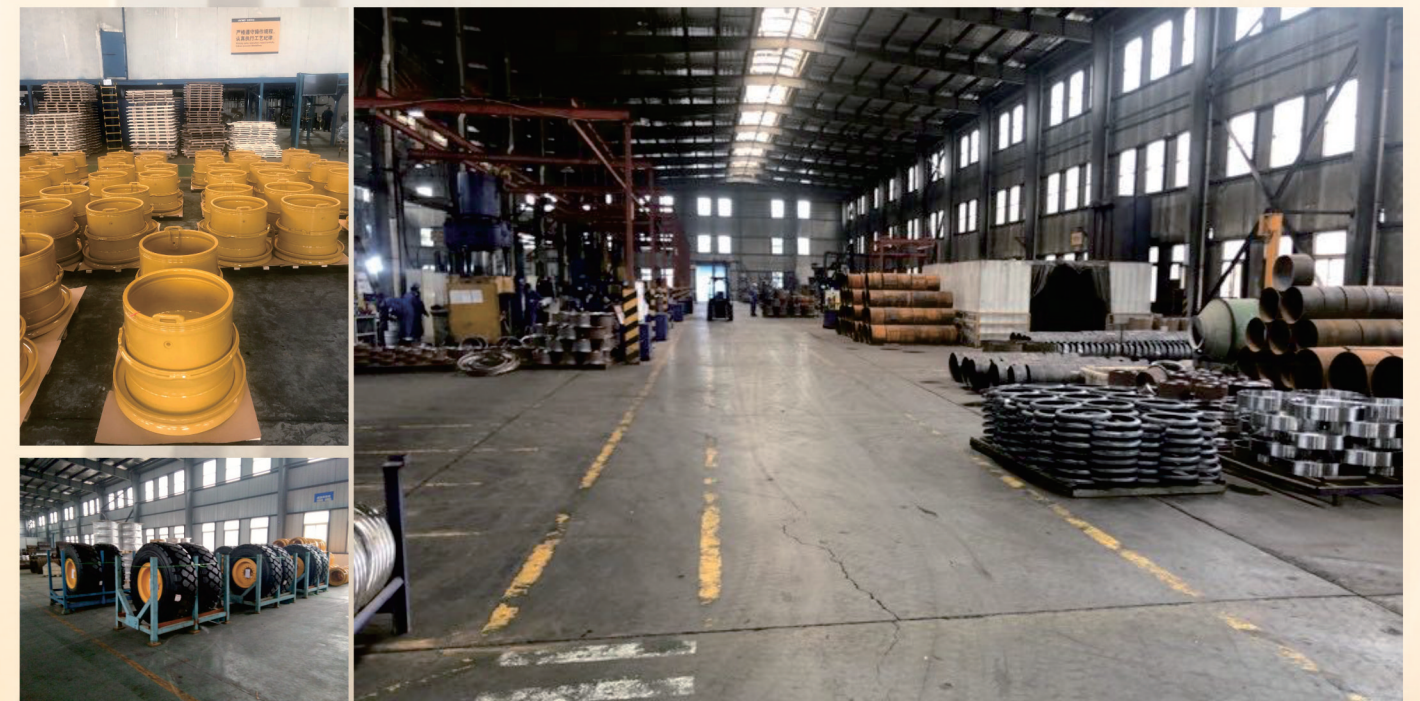
The plant is fully dedicated on manufacturing of Earth-moving & Industrial wheel products from 12"-63" with one piece and multi-pieces design, by covering wide ranges of earth-moving & Industrial wheels products, and own materials production advantage. We ensure , strong manufacturing capability, on time delivery, and reliable supplying stability to our global customers.

Nowadays, TUENZ products have been successfully supplied to important OEMS, well-known tire, auto parts brands and after markets, to over 60 countries globally.



**TUENZ** 12"-63" Earth-moving & Industrial wheels

## PLANT OVERVIEW





## Earth-moving & Industrial Wheels

### INDUSTRIAL FORKLIFT APPLICATION



Wheel Size	Recommended Tire
4.00E - 9	600 X 9
5.00F - 10	650 X 10
5.00S - 12	700 X 12
7.00 - 15	28 X 9 - 15
4.33R - 8	18 X 7 - 8

### Articulated Dump Truck

Wheel Size	Recommended Tire
25-19.50/2.5	23.5R25
25-22.00/3.0	26.5R25
25-25.00/3.5	29.5R25
29-25.00/3.5	29.5R29



### Underground Mining Truck

Wheel Size	Recommended Tire
25-14.00/1.5	17.5-25
25-17.00/1.7	20.5-25
24-10.00	14.00-24



### Grader



Wheel Size	Recommended Tire
24-8.00TG	12.00-24TG
24-9.00	13.00-24TG
24-10.00VA	14.00-24TG
24-10.00VA	16.00-24TG
25-12.00/1.3	15.5-25
25-14.00/1.5	17.5-25
25-17.00/1.7	20.5-25



# Earth-moving & Industrial Wheels

## Rigid Dump Truck



Wheel Size	Recommended Tire
25-13.00/2.5	18.00-25
25-19.00/2.5	23.5-25
25-22.00/3.0	26.5-25
25-25.00/3.5	29.5-25
29-25.00/3.5	29.5-29
29-27.00/3.5	33.25-29
33-28.00/3.5	33.5-33
45-36.00/4.5	45/65R45
49-17.00/3.5	24.00-49
49-19.50/4.0	27.00R49
51-22.00/4.5	30.00R51
51-24.00/5.0	33.00-51
51-26.00/5.0	36.00-51
57-27.00/6.0	37.00R57
57-29.00/6.0	40.00R57
57-32.00/6.0	46/90R57
63-36.00/5.0	53/80R63
63-44.00/5.0	59/80R63

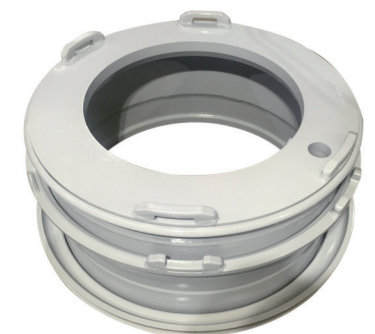
## Loader



Wheel Size	Recommended Tire
25-11.25/2.0	16.00-25
25-13.00/2.5	18.00-25
25-12.00/1.3	15.2-25
25-14.00/1.5	17.5-25
25-17.00/1.7	20.5-25
25-19.50/2.5	23.5-25
25-22.00/3.0	26.5-25
25-25.00/3.5	29.5-25
29-25.00/3.5	29.5-29
33-28.00/3.5	35/65-33
35-27.00/3.5	33.25-35
39-32.00/4.5	40/65-39
45-36.00/4.5	45/65-45

## Scraper

Wheel Size	Recommended Tire
25-19.50/2.5	23.50-25
25-22.00/3.0	26.50-25
33-13.00/2.5	18.00-33





## Earth-moving & Industrial Wheels

### Pan Scraper



Wheel Size	Recommended Tire
26 X DW20	23.1-26
24 X DW16	19.5L-24
20 X 11.00	340/80-20
17.5 X 10.00	14-17.5
18 X 9.00	12.5/80-18

### Straddle Carrier

Wheel Size	Recommended Tire
25-13.00/2.5	18.00-25
25-15.00/3.0	21.00-25
35-15.00/3.5	21.00-35



### Wheeled Gantry Crane

Wheel Size	Recommended Tire
25-11.25/2.5	16.00-25
25-13.00/2.5	18.00-25
25-15.00/3.0	21.00-25
25-17.00/2.0	20.5-25
25-19.00/2.5	23.5-25
25-22.00/3.0	26.5-25
35-15.00/3.5	21.00-35



### Underground Loader

Wheel Size	Recommended Tire
25-11.25/2.0	16.00-25
25-13.00/2.5	18.00-25
25-17.00/2.0	20.50-25
25-19.00/2.5	23.5-25





## Earth-moving & Industrial Wheels

### Rough Terrain Crane



Wheel Size	Recommended Tire
25-9.50/1.7CR	14.00-25
25-11.00/1.7CR	16.00-25
25-14.00/1.7CR	17.50-25
25-13.00/2.5	18.00-25
25-17.00/2.0	20.5-25
25-19.00/2.5	23.5-25
25-22.00/3.5	26.50-25
25-25.00/3.5	29.5-25
33-13.00/2.5	18.00-33

### Laden Container Handler

Wheel Size	Recommended Tire
24-8.5	12.00-24
24-10.00	14.00-24
24-10.00WA	14.00-24



### Empty Container Handler

Wheel Size	Recommended Tire
24-8.5	12.00-24
24-10.00VA	14.00-24



### Marine Travel Lift

Wheel Size	Recommended Tire
49-19.50/4.0	27.00R49



### Reach Stacker

Wheel Size	Recommended Tire
25-13.00/2.5	18.00-25
25-15.00/3.0	21.00-25
33-13.00/2.5	18.00-33





## Earth-moving & Industrial Wheels

### Backhoe Loader



Wheel Size	Recommended Tire
24-10.00VA	14.00-24
19.5-9.75	12-19.5
21-17.00/2.0	1300X530-533

### Heavy-duty Log Stacker



Wheel Size	Recommended Tire
25-22.00/3.0	26.5-25
29-25.00/3.5	29.5-29

### Skid Steer Loader

Wheel Size	Recommended Tire
16.5X8.25	10-16.5
16.5X9.75	12-16.5



### Aircraft Tug

Wheel Size	Recommended Tire
24-8.5	12.00-24
25-10.00/1.5	14.00-25
25-11.25/2.0	16.00-25
25-13.00/2.5	18.00-25





# Earth-moving & Industrial Wheels

